



Newsletter

The latest news, views, and announcements

INSIDE



A Message from our Chairman, Paul Schonenberg



► Chairman's Remarks

Cover Interview

Interview with Patrick Dury,
National President of the
LCGB Trade Union

Amcham Events

Upcoming Events

Highlights from
Past Events

New Videos

AmCham MBC

Welcome new Partners

AMBC Special offers

News of Interest

News from our Members

Quote of the week

What's on in Luxembourg

Vacancies

Paul's Kitchen

Useful links and other
information



Interview with Patrick Dury,

National President of the LCGB Trade Union

This newsletter is kindly sponsored by:



PM-International

AMCHAM EVENTS



End-of-year upcoming events

15/11/2023 Entrepreneur Committee Event

Topic: "Resilience and Reinvention"

21/11/2023 BCC & AmCham Personal Tax Event

AMCHAM and the British Chamber of Commerce and Luxembourg are jointly inviting you to attend our annual Personal Tax Event with guest speaker Laura Foulds, Managing Director, Analie Tax & Consulting.

24/11/2023 Thanksgiving Gala Dinner

We are very pleased to announce that we will celebrate our annual American Thanksgiving Black Tie Gala dinner event 2023

16/12/2023 AmCham Christmas Party

A great evening with entertainment dance music with Marco Boesen not just playing Christmas music!

New Videos



Transatlantic Trade and Investment

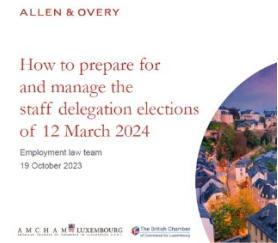


ACE Best Practice Sharing Conference



Tools4Lux Committee, Digital Housing Solutions

Highlights from AmCham Past Events



Highlights: Seminar on Social Elections with BCC and Allen & Overy



Entrepreneur Networking Club - Event Report from the Entrepreneur Committee



Learning Fest '23 - Event Report from the RTD Committee



[Click here to see our full event listing until 2024](#)

AMCHAM Member Benefits Club

Welcome our new Partners



MALT Innovative Factory

Set in a former 1950s beer bottling plant, Malt Innovative Factory in Luxembourg City is where history meets modern design. This venue, abundant with natural light and flexible spaces, offers a unique event experience that emphasizes the allure of digital arts.

Right in the heart of Luxembourg City, our venue offers a mix of vintage charm and modern versatility. With the capacity to host up to 344 guests, it provides an opportunity to shape your events precisely how you envision them.

Boost your event's impact with our expansive 47 sqm video projection area. Whether you're planning a 15-meter panoramic display or using individual screens, our top-notch projectors and sound system ensure your content stands out, leaving a lasting impression.



AMBC Partner specials of the season

News of Interest



Readers reactions to our "Eight Things our Members Want..."

- **ADEM:** Press Release - Number of job seekers on the rise at 16,565 and unemployment rate at 5.5% inboard October 2023

Luxembourg Times:

ECB presses pause after barrage of rate hikes to tame inflation



- **Luxembourg for Finance:** Luxembourg moves up the ranking in latest Global Green Financial Index (GGFI 8)
- **Clarence:** Clarence, the joint venture of Proximus & LuxConnect
- **U.S. Embassy in Luxembourg:** The U.S.-Luxembourg Leadership Exchange Award Offers Opportunities to U.S. Companies

Statistiques.lu:

Fall in activity impacts employment

Gouvernement.lu:

Promoting intercultural living "together": Launch of the 2024 call for projects

News of our Members

- **Luther:** Some highlight pictures from the Luther's Oktoberfest
- **Moventum:** Opinion - ELTIFs: Volume rises to more than 16 billion euros (formerly Hofstede) conference with Marc Jacobs

USEFUL LINKS AND OTHER INFORMATION



QUOTE OF THE WEEK



VACANCIES



WHAT'S ON

in Luxembourg from 2nd - 8th of November 2023



PAUL'S KITCHEN

This week recipe is Caramelised Onion & Bacon Tart



Subscribe Today!

→ [Click here to subscribe now](#) ←

Cancel anytime



American Chamber of Commerce in Luxembourg

6, rue Antoine de Saint-Exupéry

L-1432 Luxembourg

Phone: +352 43 17 56

I am informed that I can object to the processing of my personal data for marketing purposes at any time, either by e-mail addressed to info@amcham.lu or by clicking the link [Unsubscribe](#).

[Preferences](#) | [Unsubscribe](#)

 Forward

 Share

 Share

 Tweet